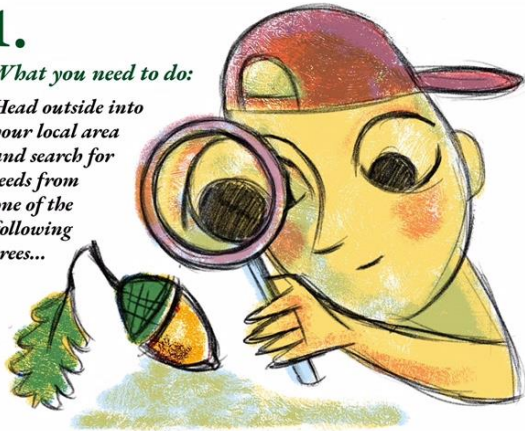


Grow your own tree for the Quantocks! At sites like Cothelstone Hill over the next few years we will be planting new trees to help diversify the woodland and to repair the damage done by ash dieback disease. To do this we will need young trees to plant – and trees grown from local seeds, from the Quantock area, would be ideal. This is where you come in! You can help us at home by growing new trees from seed you have collected. This time of year is great to get outside and look for them. Not only will you get to watch the magical transformation of a seed into a tree, you will also be helping to make the woodlands of the Quantock Hills AONB a better place. See the pics for details don't forget to tag us with #fromlittleacorns 🌲

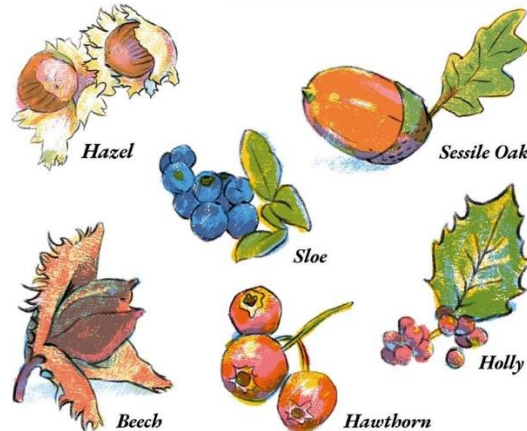
Grow your own tree for the Quantocks!

1.

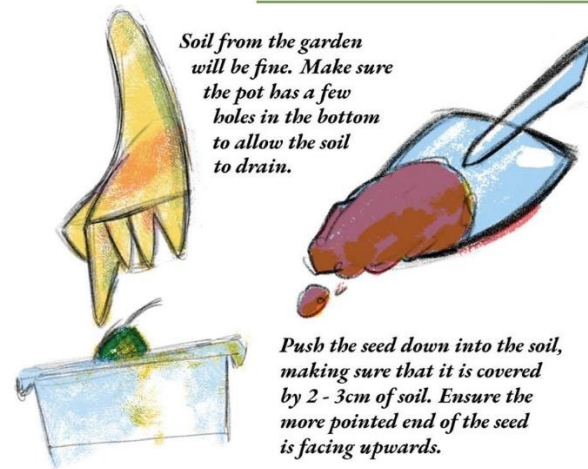
What you need to do:
Head outside into your local area and search for seeds from one of the following trees...



2. Search for seeds on the ground beneath the living trees of these species:



3. Fill a pot with soil (a 500ml sized yoghurt pot will do).



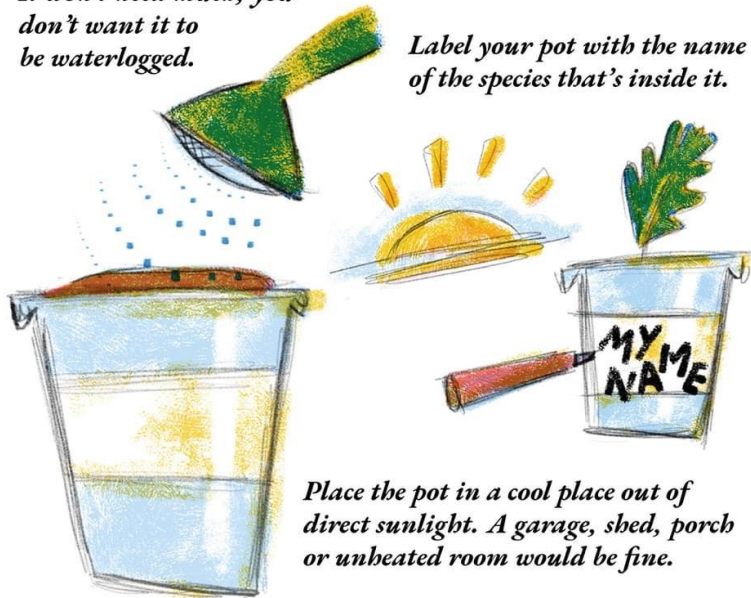
Soil from the garden will be fine. Make sure the pot has a few holes in the bottom to allow the soil to drain.

Push the seed down into the soil, making sure that it is covered by 2 - 3cm of soil. Ensure the more pointed end of the seed is facing upwards.

-
- 4.** *If the soil is dry give it a bit of water to ensure it is damp.*



It won't need much, you don't want it to be waterlogged.



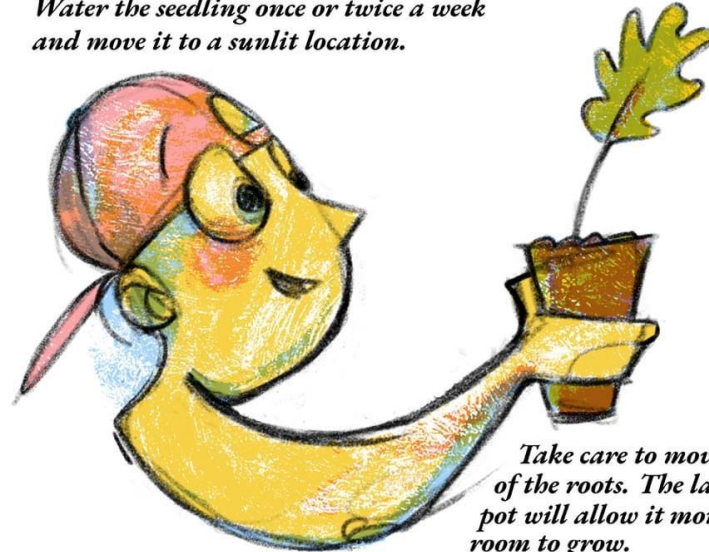
Label your pot with the name of the species that's inside it.

Place the pot in a cool place out of direct sunlight. A garage, shed, porch or unheated room would be fine.

-
- 5.** *Once the seedling is about 25cm high carefully move it to a larger pot.*



If all has gone well your seed should germinate in spring. Water the seedling once or twice a week and move it to a sunlit location.



Take care to move all of the roots. The larger pot will allow it more room to grow.

Take care Please take note:



Before you head outside to find your seeds, please take note of the following things

- *Make sure you only take 10 seeds from a single species to grow yourself. Seeds are food for a range of animals, and you must leave some to germinate naturally.*
- *To ensure you have the best chance of success, avoid seeds that have holes in. These may have been parasitized or eaten. Also make sure your seed is brown as this means it is more likely to be ripe and ready to grow.*
- *Make sure that you comply with the UK government coronavirus guidance. You can find the latest guidance here: [gov.uk/coronavirus](https://www.gov.uk/coronavirus)*

What happens next? Get in touch:



Please email us to let us know what tress you have planted.*

- *We will then be able to get in touch with you next year to find out how your trees are doing and to organise the planting of them out into the wild.*
- *Send your email to: qlps@somerset.gov.uk adding the subject title *From Little Acorns*.*
- *Share on social with [#FromLittleAcorns](https://twitter.com/FromLittleAcorns)*

** By emailing us you are opting-in to receive updates from the QLPS. Your information will not be shared with anyone outside our organisation. For full privacy policy see: [quantockhills.com/cookie-policy](https://www.quantockhills.com/cookie-policy)*