

CHRISTMAS 2023

Covid-March 2020, the Town Council received support from the Emergency High Street Recovery Fund. The money helped cover the costs for Fuse Performance Ltd Street Entertainers, Lamp Post Banners, Free Parking, Window Wraps, Artwork for Posters, Lamp Post Banner, and Window Wrap.

Christmas 2022 we saw £6,513.00 covered by Emergency High Street Recovery Fund. Wellington Town Council funding £4284.55.

Following the pattern of the two previous years the entertainment schedule leading up to Christmas 2023 will include:

Saturday 25th November 2023: Christmas Market and Lights Switch On event – 9am to 6pm. Wellington Produce Market to run the administration and setting up of the market. Council Officers to provide them with a Street Layout Plan to follow.

Saturday 2nd December 2023 – 10am to 1pm Street Entertainment

Saturday 9th December 2023 – 10am to 1pm Street Entertainment

Saturday 16th December 2023 – 10am to 1pm Street Entertainment

Thursday 21st December 2023 – 10am to 1pm Street Entertainment

See appendix A – Estimated Cost Report – Fuse Performance Ltd provided an entertainment and costs. Fuse Performance Ltd have confirmed should the events be cancelled; the town council will have to pay cancellation fees.

Fuse Performance Ltd also provided other entertainment options:

- Light up elf £350 plus £55 travel
- Christmas Light up Fairy on stilts with music in costume - £300 plus £30 travel
- Balloon Modellers £300 plus £40 travel
- Skating Christmas presents £700 plus £55 travel (duo)
- Winter fairy with a crystal ball (contact juggling see image attached - £380 plus £55 travel - mesmerising magical walkabout.
- Winter Jesters on stilts £700 duo plus travel £40
- They have a variety of fire jugglers that could perform in locations in the High Street area. £250 - £350 plus £30 - £45 travel. They could also do walkabout juggling - tricks, some also do balloon modelling.

Another option is for the Town Centre Committee is to set a budget and ask Fuse Performance Ltd to work to a budget for Street Entertainment. Fuse Performance Ltd may be able to offer more with multi skilled artists who can be adaptable, e.g., bringing two different costumes, and offering more for the programme.

EVENT INSURANCE:

The Council will need to meet cancellation costs for all other items hired. The Deputy Clerk is seeking quotes for appropriate cancellation insurance cover and an update will be given at the meeting (or beforehand via email if possible). It should be noted, however, that it is unlikely that companies will provide cover for cancellation in case of bad weather.

Other entertainment ideas to consider:

1) Santa's Grotto: Outside: Inflatable Option:

Odin Events: Bronze, Silver, and Gold Packages – see attached price list.(Appendix B)



Technical info:

- Space Requirements: A minimum space of 4m wide x 2.4m high x 4m deep is required, however, the inflatable Santa's Grotto can be filled out or reduced to fit your specific space requirements.

JM Entertainment:

Price: From £695.00



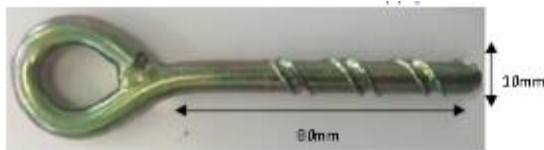
Gold Christmas Grotto Package:
Santa's Inflatable Grotto
2 x Winter Wonderland Backdrop
12m of White Picket Fencing
2 x Reindeer
2 x Snowman
4 x Festive Mood Lights
2 x Artificial Snow Area

Postbox & Candy Canes
Red Carpet and Rope
Boot, Rug & Santa's Sack
Santa's Light & Red Carpet

HEALTH & SAFETY:

We have been advised there are a lot of restrictions with hardstanding, due to health and safety reason. Legally all Inflatable equipment that are to be installed outdoors on a hard surface have to have at least 163kg of weight applied to each pegging point. A company we have spoken to have said it's not feasible or logistically possible to transport 1000's of Kg's of weight.

The alternative option would be to Drill and Bolt, which is dependant on the suitability of the surface. Our trained operative will drill into the ground and secure the anchor points with specifically designed bolts which meet the load requirements mentioned above. The bolts are 80mm in length and 10mm diameter, we also offer to fill in the holes before we leave site with either a concrete mix or silicone. This has been done in many locations and is not noticeable once complete. Otherwise, the inflatable would have to be pegged in on Grass or go indoors in a suitable location.



SANTA'S GROTTO INSIDE:

ES Promotions:

1 day hire: Set up and collection for £1,500 + vat.

24-day hire: in the region of £9,000 + vat

Santa Statue

Reindeer Statue

2 x 20ft x 10ft backdrops

Grotto sign

Red carpet / rope posts

Winter wonderland sign

2 8ft x 4ft stocking boards

Note:

- We would then need to find an empty shop to dress.
- Decide on the period of hire? Suggest one month from Saturday 25th November to Sunday 17th December.
- Decide on when the Grotto is open? Suggest Saturday 25th November for light switch on from 12noon to 6pm. Every Saturday morning on 2nd, 9th, 16th December. Approach Rotary Club is they would provide Santa.



2) SNOW GLOBE:

Odin Events

Price: £1600 + VAT incl. Staff. (Appendix C)



Mini' Christmas snow globe (3.2m wide x 3m high).

Both are great photo opportunities and a fantastic way to get into the Christmas spirit.

What's Included

- 1x 3m Giant Inflatable Snow Globe Hire
- 1x Internal backdrop (snowy log cabin comes as standard)
- A snowman, Christmas tree and present props
- Snowballs and artificial snow
- Rope and post to surround the inflatable snow globe.
- 2x inflatable snowglobe operational staff.

J M Entertainment:

Price From: £1,450.00 plus VAT inc. staff (minimum order of £1500)

Unit size: 12ft x 12ft

Space required: 15ft x 15ft.



3) CHILDREN'S RIDE: TOYSET



Hire a Fun Fair Ltd:

£750.00 + 60per mile (552mile round trip) £331.20

Staff included.

See attached price list for other rides and ideas. **(Appendix D)**

ES Promotions:

£1200 + VAT incl. staff + delivery



CHRISTMAS WINDOW SHOP COMPETITION

The Town Council agreed to take over the competition from Sue White. Competition letters will be sent to all town centre retailers mid to end of October inviting them to join in. Judging date, first week of December.

CHRISTMAS MARKET & LIGHT SWITCH ON - Saturday 25th November 2023
Estimated Expenditure Report

		Projected Costs 2023	Cost - 2022	Notes
Performers/Entertainment inc. admin fee 15%		£ 7,572.75	£ 4,160.00	2022 - paid by Emergency High Street Fund.
Saturday 25th November - 2 bouncing elves, 2 Wish Fairies & Magician	£ 2,035.00			Replace with fire jugglers/walkabout jugglers
Saturday 2nd December - Snow King & Christmas Cracker	£ 680.00			
Saturday 9th December - Penny Farthing , Light up Elf,	£ 1,145.00			
Saturday 16th December - Snow Queen, Mr & Mrs Nutkins	£ 1,145.00			
Thursday 21st December - Bouncy Elves, Reindeer	£ 1,580.00			
Steve Hawker PA System & Generator		£ 500.00	£ 475.00	
Prosound & Light - Stage		£ 900.00	£ 900.00	
Window Wrap		£ 500.00	£ 340.00	
Artwork for Posters,Newspaper lamp post banners and Social Media		£ 300.00	£ 275.00	
Carly Press - Stage Banner			£ 435.00	2023 - to use same banner again. 2022:Paid by Emergency High Street Fund
St Johns Ambulance		£ 500.00		FOC 2022 - Local St. John's Ambulance volunteers covered event.
Wellington Weekly adverts - 2 x		£ 500.00	£ 411.77	
Bay Media Lamp Post Banners		£ 1,500.00	£ 1,386.00	2022 - paid by Emergency High Street Fund. 2022 - was priced wrong, as it was based previous years event timings from 12noon. The event now include the market and stage entertainment. High Street will be closed from 6am to 20.30pm
Traffic Management/Road Closure		£ 1,100.00	£ 475.00	
Somerset Council - Music Entertainment licence		£ 70.00	£ 70.00	
Event Refreshments - Marshals		£ 100.00	£ 38.70	2023 estimated to include Road Closure Marshall
Free Parking - Somerset Council		£ 1,000.00	£ 967.00	2022 - free parking in North Street, South Street and Asda Car Parks. Paid by Emergency High Street Fund
S171 Christmas Tree - Somerset Council		£ 50.00	£ 50.00	
Extras: cable ties, sweets etc.,		£ 150.00	£ 70.00	
Toy Set Ride		£ 1,000.00		Christmas Light Switch on Event
Snow Globe		£ 1,600.00		Christmas Light Switch on Event
Santa's Grotto		£ 1,500.00		Christmas Light Switch on Event
TOTAL		£ 18,842.75	£ 10,053.47	



QUOTE NUMBER
6622

DATE
25 July 2023

VALID UNTIL
24 August 2023 at 2:00 PM

FROM
Bethyn Barrass
Odin Events Limited
Unit 1
Roundhouse Farm,
Marston Meysey,
SN6 6LL
www.odinevents.com

PHONE
0800 500 3109

COMPANY NUMBER
07214690

VAT NUMBER
102571063

FOR
Wellington Town Council

TO
Rebeca

EMAIL
rebecca@wellingtontowncouncil.co.uk

Santa's Grotto - 25th November 2023

Inflatable Santa's Grotto

When you want to spread a little seasonal cheer is there anything better to get the job done than an Inflatable Santa's Grotto?

With your very own grotto for hire at the click of a button, you'll be able to get in the festive spirit in no time at all.

The grotto as the perfect centrepiece, a one in a million photo-op, or just something that will make every kid grin from ear to ear. After all, Christmas only comes around once a year so why not take a look inside the grotto and see what Santa has in store for you this year!

- Ideal for children's Christmas parties
- Perfect for taking your school's festivities to new heights
- Loved by all kids — big and small!



IMG_7590.HEIC

<input type="checkbox"/> Bronze Package External Theming: Small snow area 6 ft Frosty the snowman prop Prop Presents 1 x par can lights to enhance theming White Picket Fencing 1 x artificial trees with presents Internal Theming: Santa's sack with prop presents 1 x PAR Can light. Table with lamp. Based on a 6 hour hire within Mainland UK.	1,000.00 Not selected
<input type="checkbox"/> Silver Package External Theming: Medium snow area 6 ft Frosty the snowman prop Sleigh Prop Winter Wonderland backdrop drape for the rear of the grotto Santa's Mail box Prop Presents 2 x par can lights to enhance theming cobbled stone effect path White Picket Fencing 2 x artificial trees with presents Internal Theming: Santa's sack with prop presents Santa's Throne 1 x PAR Can light. Based on a 6 hour hire within Mainland UK.	1,600.00 Not selected
<input type="checkbox"/> Gold Package External Theming: External Snow area to both sides of the grotto 6 ft Frosty the snowman prop Sleigh with Reindeer props. Winter Wonderland backdrop drape for the rear of the grotto Santa's Mail box Prop Presents 3 x par can lights to enhance theming Cobbled stone effect path White Picket Fencing 3 x artificial trees with presents Internal Theming: Santa's sack with prop presents Santa's Throne Santa's Stool Table with lamp. Based on a 6 hour hire within Mainland UK.	2,000.00 Not selected
<input type="checkbox"/> Santa	400.00 Not selected

Santa's Helper		250.00
Options selected		0 of 4
Subtotal		250.00
VAT 20%		50.00
Total GBP including VAT		£300.00



Agenda Item: 5a

Appendix C

QUOTE NUMBER
6746

DATE
17 August 2023

VALID UNTIL
16 September 2023 at 11:00 AM

FROM
Bethyn Barrass
Odin Events Limited
Unit 1
Roundhouse Farm,
Marston Meysey,
SN6 6LL
www.odinevents.com

PHONE
0800 500 3109

COMPANY NUMBER
07214690

VAT NUMBER
102571063

FOR
Wellington Town Council

TO
Annette Kirk

EMAIL
annette@wellingtontowncouncil.co.uk

Giant Snow Globe Hire - Wellington Town Council (25th November 2023)

10ft Giant Snow Globe Hire including props (Giant snow man, Christmas tree, and artificial snow).

1 day

Hire the Experts!

Some of the locations and events that our inflatable snow globe has been used include,

Brand marketing and promotional campaigns,

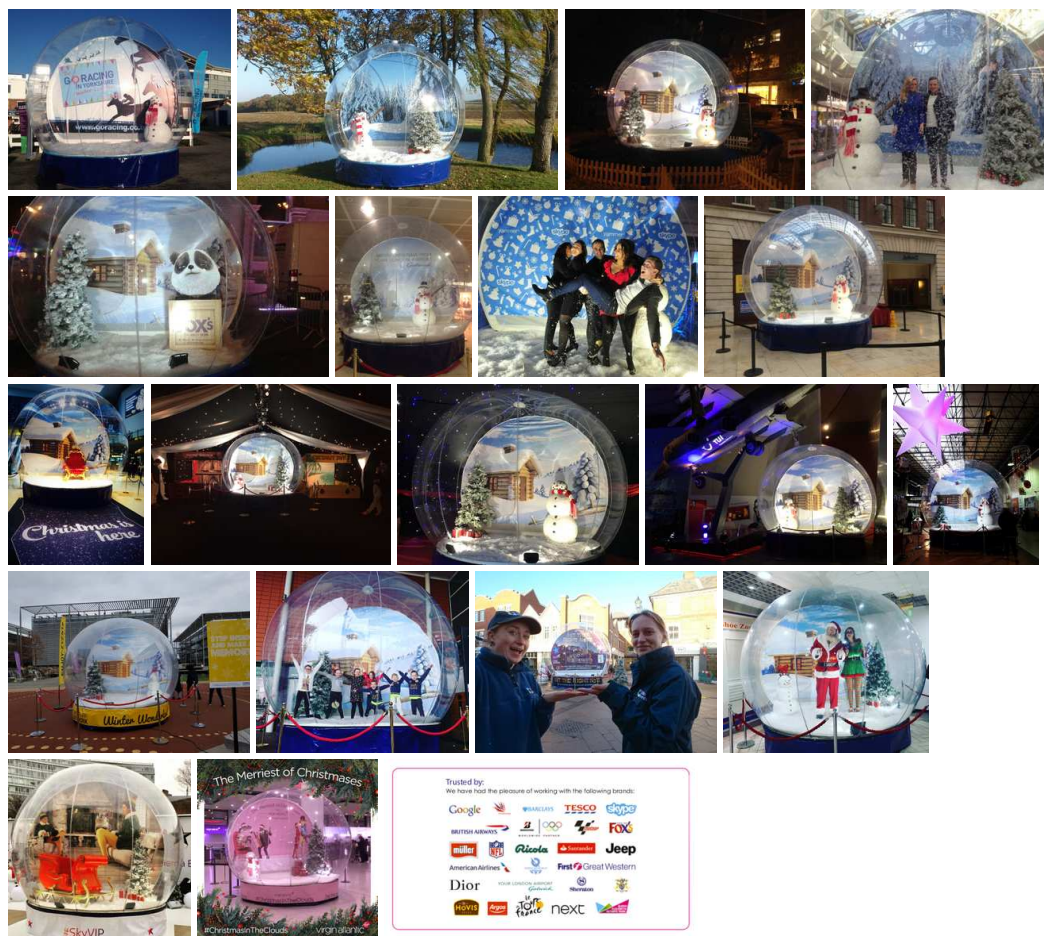
Based on 5 hour operational time.

Includes CRB checked staff, all fuel surcharges and all insurances.

Please note that power will need to be supplied to the site of the globe. Please note that our team do not always carry cable protector.

Please click on the thumbnails below to enlarge the images.

Please note that our team will require 2 hours to set up and pack down the globe. Power will be required from the start of the build and until the globe is fully packed down.



100.00
x 1
100.00
Not selected

100.00
x 1
100.00
Not selected

<div data-bbox="114 98 456 132" data-label="Section-Header"> <input type="checkbox"/> Bespoke branded skirt. </div> <div data-bbox="154 159 585 340" data-label="Image"> </div>	<div data-bbox="1369 91 1479 152" data-label="Text"> <p>350.00 Not selected</p> </div>
--	--

You may also be interested in...

<div data-bbox="114 504 740 537" data-label="Section-Header"> <input type="checkbox"/> Wheelchair Accessible Christmas Sleigh Prop </div> <div data-bbox="154 560 1197 694" data-label="Text"> <p>If you are looking for a Christmas photo opportunity that's inclusive for all abilities, we have the perfect solution the form of our fantastic oversized wheelchair friendly Santa's sleigh, one of only of a handful of Wheelchair accessible Santas Sleighs in the UK our festive sleigh is the perfect way for the whole to capture the Christmas magic.</p> </div> <div data-bbox="154 714 292 741" data-label="Text"> <p>How it works</p> </div> <div data-bbox="154 761 1189 862" data-label="Text"> <p>The Festive sleigh comes in two sections and is assembled on site leaving an access path through the centre for wheelchair users or those who are less-abled. the idea is to have enough standing and seating room for all the family to be included in the festive photo.</p> </div> <div data-bbox="154 882 1193 945" data-label="Text"> <p>Available to hire Nationwide on a short-term or long-term hire basis, either as a stand-alone sleigh or with a herd of reindeer props to bring the prop to life, A great photo/selfie opportunity.</p> </div> <div data-bbox="154 967 663 1149" data-label="Image"> </div>	<div data-bbox="1369 499 1479 560" data-label="Text"> <p>900.00 Not selected</p> </div>
--	---

☐ **Snow Machine Hire with 180 mins of falling snow (based on a 6 hour hire).**

1,000.00
Not selected

Hire our professional silent snow machine and add a realistic snow scene to your next event, great for all types of Christmas / winter themed events. With our bio-degradable snow solution, a 30m coverage and adjustable snowfall output, our snow canon is the perfect solution for both indoor and outdoor events.

Our specialist snow machines are excellent for creating a magical and memorable experience at a Christmas light switch on, the falling snowflakes can be tailored to your requirements. The snow machine is capable of providing either a light snow flurry or a blizzard effect, (great for creating snow cover to grounds areas).

The snow machines come with an experienced operator who will create the desired effect, including a light snow build up on the desired area and a beautiful snow fall for your guests, photographs & social media. One machine's reach is approx 10m-15m without wind assistance.

For a heavier snow fall look, we can also provide larger packages with more machines and effects.

Our snow is biodegradable, very dry foam solution which acts and melt away in the same way that real snow does. Outside, this is not slippery unless on a shiny surface such as smooth marble flags. Please note, the Snow Fluid is primarily water and dissipates naturally within a couple of hours. It doesn't 'stick' like real snow.

OUTDOORS: Should you require a thicker snow effect, we can use a number of different Snow Machines and a snow fluid that will create an accumulation of 'snow' on the ground. This is a great choice for Christmas Light Switch On events, Outdoor events and recreating snow scenes!

INDOORS: We can create a finer snow effect using a snow fluid that is fast-drying; it will evaporate within seconds of touching the ground, making it incredibly safe and leaving you with no clean up! Ideal for indoor Christmas Parties where you want to bring the Snow indoors!

WINTER THEMING AND PROP HIRE

Why not go all out and dress your event by requesting our set dress service, our event crew will add snow detail to surrounding areas to complement the falling snow, service can include dressing/snowing of trees and surrounding shrubbery, rooftops, window sills and add faux snow to bedding areas ensuring you have a real winter wonderland experience.

In addition to our Set dress service, we also own and stock, a huge selection of winter-themed and Christmas props. From singing reindeer, to life-size polar bear props, just pop it in your quote request and leave the rest to us!



Snow Globe Dimensions

Please note that we require an operational space of 5m x 5m.

Power will be required at the site of the globe:

Power requirements:

1.1kw fan plus 3 x LED's (1 normal household socket normally covers this!)

Snowglobe



Options selected	0 of 4
Subtotal	1,600.00
VAT 20%	320.00
Total GBP including VAT	£1,920.00



2023

Price List



Who We Are

Hire A Funfair are your complete professional service for the hire of funfair rides and game equipment. If you are organising an event, festival or celebration and looking to give your guests the wow factor and keep them entertained, you have come to the right place.

We have over 30 years experience within the industry including supplying attractions in Asia, Middle East and Europe with a 100% safety record. These have ranged from observation wheels to candy floss carts, full travelling theme parks to a children's ride. We have been involved with installations at such events as Hyde Park Winter Wonderland, Dubai Shopping Festival, Hong Kong World Carnival, Suzuki Adverts, Celebrity Birthdays, Glasgow Loves Christmas, Mint Festival, Creamfields, Paris Christmas Celebrations, London Fashion Show and CBBC Summer Social.



What We Offer

- Well-presented and maintained rides - fully built up and ready to use
- A complete, professional service from first contact until after the event
- Peace of mind - all health and safety requirements adhered to, and paperwork provided and up to date
 - 24-hour contact should you need it
 - Competitive, affordable pricing
- Unrivalled experience, advice and the ability to supply equipment to your specific requirements..

What Can We Do

We can supply first class equipment with well trained staff

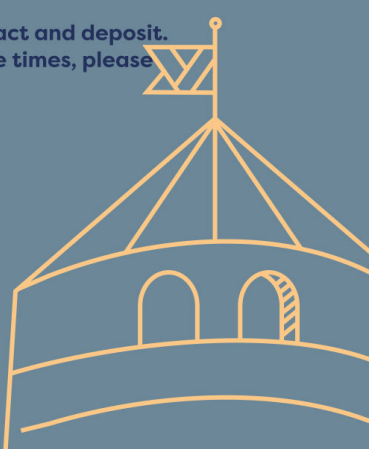
All our costs include staffing, transportation, £10m Public Liability Insurance, Safety Documentation, Ride Risk Assessment, Installation, Dismantling, Operation and 24/7 contact. NO HIDDEN COSTS

We can arrange site visits should they be necessary at £0.60p plus VAT per mile. We can offer package prices on all large rides when you order three or more and we can work with your budget.

How You Can Get in Touch

If you have any questions, please don't hesitate to contact us by phone 01904 202 557 or by email at info@hireafunfair.com. For more ride information, pictures and technical information including sizing, visit our website www.hireafunfair.com.

Please note all rides attractions and infrastructure are subject to availability at the time of contact and deposit. The prices below are also based on easy access and if you require specific install and dismantle times, please discuss this before contact is issued.





Funfair Rides

(All prices excl. VAT)

Modern Funfair Rides

Helter Skelter	£1,600
Meterorite	£1,825
Rock O Plane/Skyliner	£1,825
Mirror Maze	£1,950
Miami	£2,200
Sizzler Twist	£2,200
Paratroopers	£2,200
Dumbo's	£2,200
Astroglide	£2,350
Simulator	£2,450
Apple Roller Coaster	£2,600
Dragon Roller Coaster	£2,600
Dodgems	£2,650
Waltzer	£2,750
Jump N Smile/Frogs	£2,850
Superstar/Move It	£3,000
Superbob	£3,000
Tagada	£3,100
Matterhorn	£3,100
Stargate/Mega Spin	£3,100
Booster/Bomber	£3,200
Extreme Orbiter	£3,200
Freak Out	£3,200
Superbowl	£3,200
Superspin	£3,400
Waveswinger	£3,400
Sea Storm	£3,400
Starflyer	£3,650
Loop Fighter/Atmosfear	£3,925
Reaverse Bungee	£4,450

Giant Wheel	From £20,000
Log Flume	From £20,000
Wild Mouse Coaster	From £20,000

Ghost Trains & Funhouses

Two Deck Ghost Train	£2,200
Three Deck Ghost Train	£2,900
Two Deck Funhouse	£2,200
Three Deck Funhouse	£2,900

Traditional Funfair Ride

Children's Swing Boats	£1,050
Children's Carousel	£1,200
Adult Swing Boats	From £1,850
Ferris Wheel	£2,300
Dodgems - Traditional	£2,600
Adult Chair O Planes	£2,850
Carsousel	£3,200
50ft Lighthouse Slip	£3,700

The above prices are PLUS VAT and based on normal access. All rides can be operated for 6 hours with additional hours available at £100 plus VAT per hour.

Children's Rides

Cup and Saucer	£750
Chair O Planes	£750
Mini Octopus	£750
Paratrooper	£750
Ski Jump	£750
Toy Set	£750
Train Ride	£750
Six Bed Trampolines	£750
Mini Ferris Wheel	£850
Moster Trucks	£850
Jumping Jack	£850
Jets	£900
Formula 3000	£900
Frozen Swing	£950
Mini Miami	£950
Balloon Ride	£950
Water Walkers/Balls	£950
Bumper Cars	£1,150
Bungee Trampolines	£1,150
Flying Planes	£1,500
Go Gator Roller Coaster	£1,500
Pony Express	£1,500
Race O Rama	£1,500
Formula 1	£1,500
Inflatable Play Centre Truck	£1,500
Runaway Children's Train	£1,825

The above prices are PLUS VAT and based on normal access. All rides can be operated for 6 hours with additional hours available at £100 plus VAT per hour.

Please Check Venue Access Requirements With us Prior to Order.

Game Stalls

We can provide side stalls and round stalls with a variety of games including Hook A Duck, Ring Toss, Coconut Shy, Darts, Shooting Gallery, Cross Bows, Ring Over the Coke Bottle, Ball n Globe, Ball in a Churn and Penalty Shootout.We include 75 prizes per stall in our games.

Side Stalls

1 Game Stall (inc.75 prizes)	£675
2 Games Stalls (inc.150 prizes)	£1,250
3 Game Stalls (inc.225 prizes)	£1,750
4 Game Stalls (inc.300 prizes)	£2,350
5 Game Stall (inc.375 prizes)	£2,850

Round Stalls

1 Game Stall (inc.75 prizes)	£900
2 Games Stalls (inc.150 prizes)	£1,625

We are able to provide larger games including Whack a Minion and Kentucky Derby.These games start from £2,050 plus VAT plus prize package

Additional Fillers

1 Climbing Wall (4 hours)	£1,050
Photobooths	From £700
Crazy Golf	£950
Test Your Strenght	From £650

The above prices are PLUS VAT and based on normal access. All rides can be operated for 6 hours with additional hours available at £75 plus VAT per hour.

Food

We can provide a wide selection of catering units including carts and bicycles serving Ice Cream, Pop Corn, Candy Floss, Pick N Mix, Jacket Potatoes, Donuts, Slush, Burgers, Hot Dogs, Smoothies, Pimms and Mulled Wine from £700 each plus VAT.

Extras

We can provide the following extra services if required:

Site Visit

(to check venue access) £0.60p per mile plus VAT from YO23 2BD

Site Manager

Daily rate of £400 plus VAT (to manage the install,operation and de-rig of rides if necessary)

Site Specific Risk Assessments

£525 plus VAT

Team Building & Inflatables

We can supply all types of inflatables and team building equipment for your event including the following:

- Inflatable Volleyball
- Human Table Football
- Penalty Shootout (inflatable)
- Gyroscope
- Human Roulette
- Mobile Zipline
- Rodeo Bull/Banana/Sheep/Penguin
- Seaways
- Spaceball
- Snowboard Simulator
- Surf Machine
- Human Demolition Zone
- Bungee Run
- Rock N Roll Jousting
- Gladiator
- Kangaroo Boxing
- Pillow Wars
- Dash N Grab
- Boot Camp Challenge
- Jungle Run Assult Course
- Laser Arena
- Helter Skelter Slide
- Pirate Ship Assult Course
- Laser Ball Pond
- Laser Clay Shooting
- Giant Scalextric
- Vision Racer
- Crazy Golf
- Giant Slide
- And Many More!

Prices for the above available on request.

Terms & Conditions of Business

In these terms and conditions unless the context otherwise requires the following expressions have the following meanings:

'you' 'your' 'yours' 'yourself' - means the customer to whom we have agree to provide the Services.
'we' 'our' 'ourselves' 'us' - means Hire A Funfair Limited (Company No. 12686336) of 8 Marsden Park, York, YO30 4WX.
'ADIPS' - means The Amusement Device Inspection Procedures Scheme.
'Business Day' - a day other than a Saturday, Sunday or public holiday in England when banks in London are open for business;
'the Charges' - means the charges set out in the booking confirmation form.
'the Event Date' - the date agreed by the parties for provision of the Services and as detailed in the booking confirmation form;
'the Services' - means the equipment and other related services detailed in our booking confirmation form;
'the Venue' - means the event venue detailed in the booking confirmation form.
'this Agreement' - means this agreement with you for the provision of the Services.
'these Terms' - means these terms and conditions to which this Agreement for the supply of the Services is strictly subject.
All other words and expressions are to be given their normal English meaning taken in the context of the Agreement and these Terms. Any dispute as to the meaning of a word is to be settled by reference to the Oxford English Dictionary.
Any reference to a clause shall mean a clause of these Terms unless otherwise stated.
In these Terms unless the context clearly indicates another intention:

- reference to one gender includes all other genders,
- reference to the singular includes the plural and vice versa,
- reference to writing includes fax, e-mail and similar means of communication,

The use of headings in these Terms is for convenience only and shall not affect the interpretation of these Terms.

Booking Confirmation

We will provide you with a booking confirmation form which will detail the Services that we have agreed to provide to you. Upon us agreeing to provide the Services and you accepting these Terms the booking confirmation form is to be signed by you.

Our Obligation

We will:

- deliver, set up, operate, and dismantle the equipment.
- provide the Services with reasonable care and skill and to a reasonable standard in accordance with the recognised standards and codes of practice applicable at the time of carrying out the Services; and
- provide public liability insurance, generic risk assessments, and ADIPS certificates where applicable.

Your Obligation

You must:

- provide us with full and safe access to the Venue for the purpose of providing the Services and ensure that the ground conditions are suitable for the provision of the Services.
- co-operate fully with us and provide us with all information reasonably required by us.
- provide us with 10 Business Days' notice of any change of your name, address, or other contact details.
- make available to us all facilities and services reasonably required by us to perform the Services; and
- obtain all necessary permissions, licenses and consents that may be required to enable us to perform the Services, the cost of which shall be your sole responsibility.

Price and Payment

Payment for the Services must be made by BACS, cheque (with banker's guarantee card), debit or credit card.
Time for payment for the Services is of the essence and shall be as stipulated in our booking confirmation form or otherwise 25% of the price agreed is due when you sign the booking confirmation form ('the Deposit') with the remainder due 10 Business Days before the Event Date.
The equipment for the Services will not be booked by us for the Event Date until the Deposit is received by us. For the avoidance of doubt, we will not accept any responsibility for any lack of equipment or associated losses attributable to late payment of the Deposit.
If payment is not received on the due date, we shall be entitled to charge you interest (both before and after any judgment) on any overdue amount (on a daily basis) from the due date of payment to the date of actual payment (both dates inclusive) at the rate of 8.5 per cent per annum.
You agree to pay for the Services irrespective of any dispute or claim you may have with or against any third party (e.g. another contractor not employed by us).

Cancellation/Termination

You must notify us in writing of your intention to cancel the Services for the Event Date. The Services will only be cancelled when you receive our written confirmation of the cancellation, such confirmation not to be unreasonably withheld by us. In the event of cancellation by you the following fees shall apply:

- The Deposit is non-refundable.
- 50% of the Charges where the Services are cancelled by you not less than 10 Business Days before the Event Date.
- 75% of the Charges where the Services are cancelled by you not less than 2 Business Days before the Event Date; and
- 100% of the Charges for cancellation of the Services on the Event Date. We may terminate this Agreement if you commit a material breach of your obligations under this Agreement and/or these Terms and (where such breach is remediable) you fail to remedy that breach after being requested by us to do so. This is not an action that we will take lightly, but we will be entitled to terminate this Agreement if you frustrate us from carrying out the Services or it becomes unsafe for us to continue to provide the Services.

Limitation of Liability – YOUR ATTENTION IS PARTICULARLY DRAWN TO THIS CLAUSE

We will only be responsible for any loss, damage or injury caused by our negligent act or omission or wilful misconduct. Except in respect of injury or death of any person (for which no limit applies) our maximum aggregate liability to you shall not exceed the Charges. If you do not instruct us to carry out a site visit prior to the Event Date, then we shall not be liable for any damage caused to the Venue as a result of poor ground conditions and shall be entitled to seek a full indemnity from you for any consequent claim that may be made by the owner or operator of the Venue. Under no circumstances shall we be liable to you for loss of profits or other indirect or consequential loss arising from negligence or breach of contract. For the avoidance of doubt nothing in these Terms shall affect your statutory rights as a consumer

Force Majeure

We shall not be liable for any delay in performing the Services under this Agreement if such delay is caused by circumstances beyond our reasonable control. In such circumstances we shall be entitled to a reasonable extension of time for the performance of the Services. Sometimes we will be unable to do what we have agreed due to something beyond our reasonable control. If this happens, we do not accept any responsibility for what has occurred.

Variations

We reserve the right to modify these terms and conditions. Any such modifications will only apply upon notification of those changes to you.

Waiver

Neither our failure to exercise any power given to us under these terms and conditions or to insist upon strict compliance by you with any obligation under them, shall constitute any waiver of any of our rights under them. Waiver by us of any particular default by you must be in writing and shall not affect or impair our rights in respect of any subsequent default of any kind by you, nor shall any delay by or omission by us to exercise any rights arising from any of your defaults affect or impair our rights in respect of the said default or any default of any kind.

Entire Agreement

This Agreement supersedes all prior agreements arrangements and understandings between you and us and constitutes the entire agreement between us. No variation of any provision of this Agreement shall be binding upon you or us unless agreed in writing between us.

Assignment

Save as expressly provided in this Agreement neither you nor we shall assign or otherwise transfer this Agreement or any of its rights and obligations hereunder whether in whole or in part without the prior written consent of the other (such consent not to be unreasonably withheld or delayed); We may enter into any sub-contract with any person for the provision of the Services and the performance of any part of our obligations under this Agreement. We shall not be relieved from any of our obligations to you under the Agreement by entering into any sub-contract for the provision of the Services or the performance of any part of this Agreement.

Notices

All notices which are required to be given hereunder shall be in writing and shall be sent to:

- you at the address provided by you in the booking confirmation form; · to us at the address given above; or
- such other address in England as we may each designate by notice given in accordance with the provisions of this clause. Any such notice may be delivered personally or by first class pre-paid letter or email and shall be deemed to have been served if by hand when delivered, if by first class post 48 hours after posting and if by email transmission on the day of dispatch.

Severability

Notwithstanding that the whole or any part of any provision of this Agreement may prove to be illegal or unenforceable the other provisions of this Agreement and the remainder of the provision in question shall (subject to deletion of the offending part) remain in full force and effect.

Governing Law

This Agreement shall be governed by and shall be construed in accordance with the laws of England and Wales.



Hire A Funfair

For more details
and enquiries
please visit:

www.hireafunfair.com

Or contact:

info@hireafunfair.com

Tel: 01904 202 557



